

\$849,900 - 328 42 Street, Edmonton

MLS® #E4422796

\$849,900

7 Bedroom, 5.00 Bathroom, 2,632 sqft
Single Family on 0.00 Acres

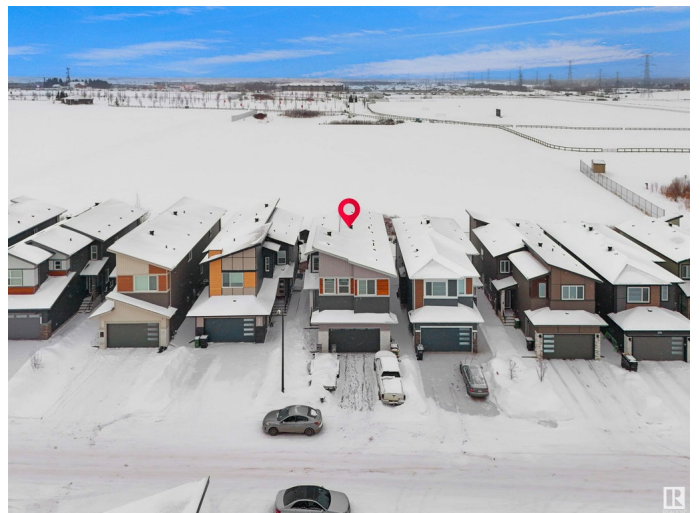
Charlesworth, Edmonton, AB

East facing 2600 sqft house backing to green space in The Hills at Charlesworth READY FOR POSSESSION NOW!! Modern Elevation at the front and fully upgraded interior with the tiles, maple railing with glass insert, quartz countertop, 9 Ft ceilings on all levels. This house is an open to above concept in family room at the back, living room at the entry, full bath on main floor, a spice kitchen and den on main floor. Second floor has bonus room, 3 bedrooms including 2 master bedrooms. Upgraded full length kitchen with built in wine rack, 60-inch electric fireplace, indent ceilings with rope light insert are some other eye-catching features of this house.

Built in 2022

Essential Information

MLS® #	E4422796
Price	\$849,900
Bedrooms	7
Bathrooms	5.00
Full Baths	5
Square Footage	2,632
Acres	0.00
Year Built	2022
Type	Single Family
Sub-Type	Detached Single Family



Style 2 Storey
Status Active

Community Information

Address 328 42 Street
Area Edmonton
Subdivision Charlesworth
City Edmonton
County ALBERTA
Province AB
Postal Code T6X 2L7

Amenities

Amenities Ceiling 9 ft., Closet Organizers, Deck, Hot Water Tankless, Vinyl Windows
Parking Spaces 4
Parking Double Garage Attached

Interior

Interior Features ensuite bathroom
Appliances Dishwasher-Built-In, Hood Fan, Oven-Built-In, Stove-Electric, Window Coverings, Dryer-Two, Refrigerators-Two, Stoves-Two, Washers-Two, Microwave Hood Fan-Two
Heating Forced Air-1, Natural Gas
Fireplace Yes
Fireplaces Insert
Stories 3
Has Basement Yes
Basement Full, Finished

Exterior

Exterior Wood, Stone, Vinyl
Exterior Features Backs Onto Park/Trees, Landscaped, No Back Lane, Playground Nearby, Shopping Nearby, Partially Fenced
Roof Asphalt Shingles
Construction Wood, Stone, Vinyl
Foundation Concrete Perimeter

Additional Information

Date Listed February 24th, 2025

Days on Market	53
Zoning	Zone 53
HOA Fees	150
HOA Fees Freq.	Annually

DATA IS DEEMED RELIABLE BUT IS NOT GUARANTEED ACCURATE BY THE REALTORS® ASSOCIATION OF EDMONTON. COPYRIGHT 2025 BY THE REALTORS® ASSOCIATION OF EDMONTON. ALL RIGHTS RESERVED. Trademarks are owned or controlled by the Canadian Real Estate Association (CREA) and identify real estate professionals who are members of CREA (REALTOR®, REALTORS®) and/or the quality of services they provide (MLS®, Multiple Listing Service®)

Listing information last updated on April 18th, 2025 at 3:17pm MDT