

## \$284,900 - 17060 67 Avenue, Edmonton

MLS® #E4424850

**\$284,900**

3 Bedroom, 1.50 Bathroom, 1,196 sqft

Condo / Townhouse on 0.00 Acres

Callingwood South, Edmonton, AB

Renovated End Unit with Parking for 3! This beautifully renovated 3-bedroom, 1.5-bath end-unit townhome offers space, style, and convenience! Soaring ceilings in the living room and ample natural light create an open, inviting feel. Natural slate tile and hardwood floors add warmth to this open-concept home. The high-efficiency wood-burning fireplace is perfect for cozy nights. The chef's kitchen features quartz & woodblock countertops, stainless steel appliances, a spacious island, and plenty of prep space—all seamlessly open to the main living area. A trendy open staircase leads to three bedrooms, including a spacious primary suite. The full bathroom offers a tub/shower and space for a makeup table, while the main floor half-bath adds extra convenience. Parking for 3! Includes a single attached garage, front stall, and tandem stall. Enjoy a private backyard and patio—perfect for BBQs or morning coffee, surrounded by mature trees.

Built in 1976

### Essential Information

MLS® #	E4424850
Price	\$284,900
Bedrooms	3
Bathrooms	1.50



Full Baths	1
Half Baths	1
Square Footage	1,196
Acres	0.00
Year Built	1976
Type	Condo / Townhouse
Sub-Type	Townhouse
Style	2 Storey
Status	Active

### Community Information

Address	17060 67 Avenue
Area	Edmonton
Subdivision	Callingwood South
City	Edmonton
County	ALBERTA
Province	AB
Postal Code	T5T 1Y8

### Amenities

Amenities	Deck, Parking-Extra, Parking-Visitor
Parking	Single Garage Attached

### Interior

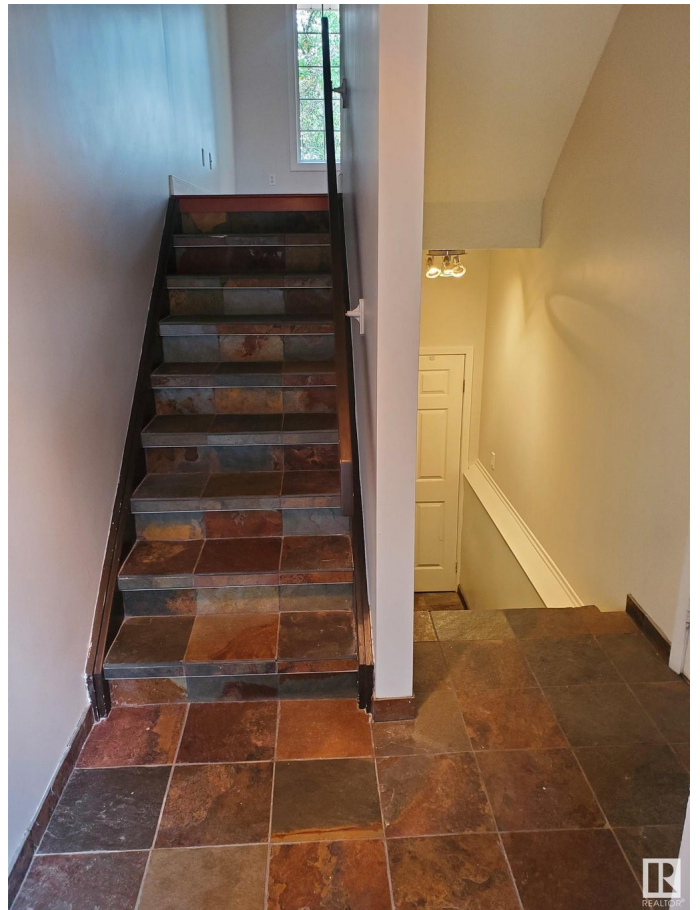
Interior Features	ensuite bathroom
Appliances	Dishwasher-Built-In, Dryer, Garage Control, Garage Opener, Microwave Hood Fan, Refrigerator, Stove-Electric, Washer, Window Coverings
Heating	Forced Air-1, Natural Gas
Stories	2
Has Basement	Yes
Basement	Partial, Partially Finished

### Exterior

Exterior	Wood, Brick
Exterior Features	Landscaped, No Back Lane, Playground Nearby, Public Transportation, Schools, Shopping Nearby
Roof	Asphalt Shingles
Construction	Wood, Brick
Foundation	Concrete Perimeter

## Additional Information

Date Listed	March 8th, 2025
Days on Market	41
Zoning	Zone 20
Condo Fee	\$388



DATA IS DEEMED RELIABLE BUT IS NOT GUARANTEED ACCURATE BY THE REALTORS® ASSOCIATION OF EDMONTON. COPYRIGHT 2025 BY THE REALTORS® ASSOCIATION OF EDMONTON. ALL RIGHTS RESERVED. Trademarks are owned or controlled by the Canadian Real Estate Association (CREA) and identify real estate professionals who are members of CREA (REALTOR®, REALTORS®) and/or the quality of services they provide (MLS®, Multiple Listing Service®)

Listing information last updated on April 18th, 2025 at 2:02am MDT