

Courtesy Of Fadi Georgi and Megan Benoit Of MaxWell Polaris

\$459,888 - 1360 Keswick Drive, Edmonton

MLS® #E4426614

\$459,888

3 Bedroom, 2.50 Bathroom, 1,457 sqft
Single Family on 0.00 Acres

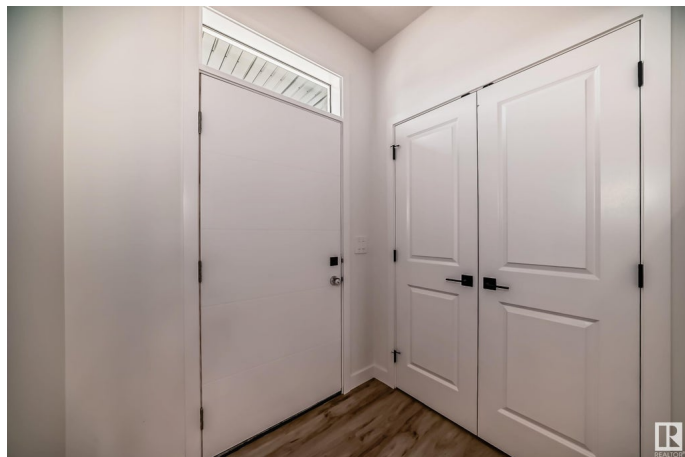
Keswick Area, Edmonton, AB

NO CONDO FEES!! Modern END UNIT townhome in the desirable community Arbours of Keswick! Features a double detached garage, side entrance and basement rough-ins for future development! Enter the home to open living spaces and a modern kitchen with 3m quartz counter tops, light wood tones cabinets and \$3,000 appliance allowance included to personalize your kitchen. Upstairs find a flex space, main bath, convenient laundry and 3 bedrooms. The primary bedroom has a walk-in closet and ensuite. Great location close to green space, parks and ponds to enjoy. Photos of previous build, interior colors are represented. Under construction with a tentative completion of June. Front & back landscaping included. HOA TBD

Built in 2024

Essential Information

MLS® #	E4426614
Price	\$459,888
Bedrooms	3
Bathrooms	2.50
Full Baths	2
Half Baths	1
Square Footage	1,457
Acres	0.00



Year Built	2024
Type	Single Family
Sub-Type	Residential Attached
Style	2 Storey
Status	Active

Community Information

Address	1360 Keswick Drive
Area	Edmonton
Subdivision	Keswick Area
City	Edmonton
County	ALBERTA
Province	AB
Postal Code	T6W 4V8

Amenities

Amenities	Ceiling 9 ft., See Remarks
Parking	Double Garage Detached

Interior

Interior Features	ensuite bathroom
Appliances	Garage Control, Garage Opener, See Remarks
Heating	Forced Air-1, Natural Gas
Stories	2
Has Basement	Yes
Basement	Full, Unfinished

Exterior

Exterior	Wood, Brick, Vinyl
Exterior Features	Airport Nearby, Playground Nearby, Public Transportation, Schools, Shopping Nearby, Stream/Pond
Roof	Asphalt Shingles
Construction	Wood, Brick, Vinyl
Foundation	Concrete Perimeter

Additional Information

Date Listed	March 20th, 2025
Days on Market	21
Zoning	Zone 56

HOA Fees 1

HOA Fees Freq. Annually

DATA IS DEEMED RELIABLE BUT IS NOT GUARANTEED ACCURATE BY THE REALTORS® ASSOCIATION OF EDMONTON. COPYRIGHT 2025 BY THE REALTORS® ASSOCIATION OF EDMONTON. ALL RIGHTS RESERVED. Trademarks are owned or controlled by the Canadian Real Estate Association (CREA) and identify real estate professionals who are members of CREA (REALTOR®, REALTORS®) and/or the quality of services they provide (MLS®, Multiple Listing Service®)

Listing information last updated on April 10th, 2025 at 9:47am MDT