

\$380,000 - 2909 23 Street, Edmonton

MLS® #E4427334

\$380,000

2 Bedroom, 2.50 Bathroom, 1,192 sqft

Single Family on 0.00 Acres

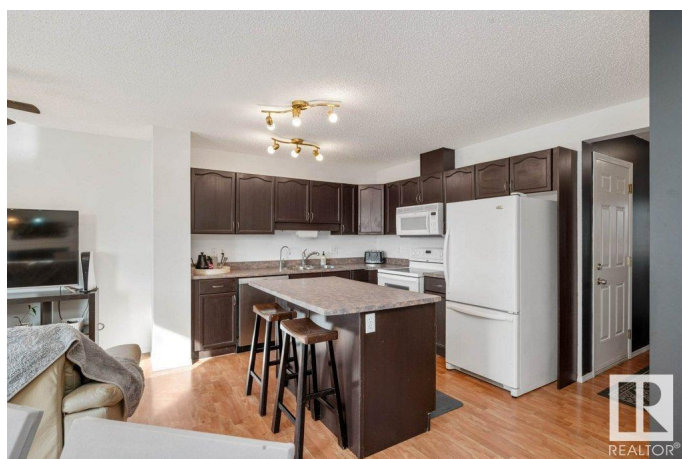
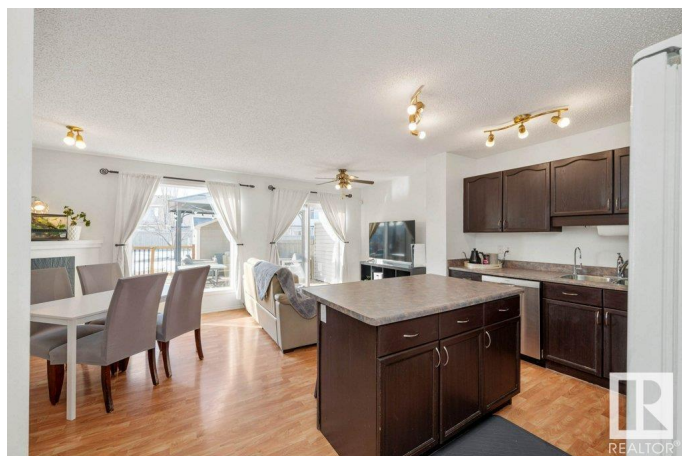
Silver Berry, Edmonton, AB

Welcome to this 2-bedroom, 2.5-bathroom half duplex in the sought-after community of Silver Berry! Featuring an open-concept design and brand-new carpet, this home offers both comfort and style. The two spacious bedrooms include a primary suite with a 4-piece ensuite and dual walk-in closets. Enjoy the convenience of a single attached garage and the luxury of a massive backyardâ€”perfect for entertaining or relaxing. Located near The Meadows Rec Centre, Market at The Meadows, and scenic walking trails, with easy access to Anthony Henday and Whitemud Drive, this is truly a place to call home!

Built in 2005

Essential Information

MLS® #	E4427334
Price	\$380,000
Bedrooms	2
Bathrooms	2.50
Full Baths	2
Half Baths	1
Square Footage	1,192
Acres	0.00
Year Built	2005
Type	Single Family
Sub-Type	Half Duplex



Style	2 Storey
Status	Active

Community Information

Address	2909 23 Street
Area	Edmonton
Subdivision	Silver Berry
City	Edmonton
County	ALBERTA
Province	AB
Postal Code	T6T 2B2

Amenities

Amenities	Deck
Parking Spaces	2
Parking	Single Garage Attached

Interior

Interior Features	ensuite bathroom
Appliances	Dishwasher-Built-In, Dryer, Garage Control, Garage Opener, Oven-Microwave, Refrigerator, Storage Shed, Stove-Electric, Washer, Window Coverings
Heating	Forced Air-1, Natural Gas
Fireplace	Yes
Fireplaces	Corner, Tile Surround
Stories	2
Has Basement	Yes
Basement	Full, Partially Finished

Exterior

Exterior	Wood, Vinyl
Exterior Features	Fenced, Landscaped, Playground Nearby, Public Transportation, Schools, Shopping Nearby
Roof	Asphalt Shingles
Construction	Wood, Vinyl
Foundation	Concrete Perimeter

Additional Information

Date Listed	March 25th, 2025
Days on Market	21

Zoning

Zone 30

DATA IS DEEMED RELIABLE BUT IS NOT GUARANTEED ACCURATE BY THE REALTORS® ASSOCIATION OF EDMONTON. COPYRIGHT 2025 BY THE REALTORS® ASSOCIATION OF EDMONTON. ALL RIGHTS RESERVED. Trademarks are owned or controlled by the Canadian Real Estate Association (CREA) and identify real estate professionals who are members of CREA (REALTOR®, REALTORS®) and/or the quality of services they provide (MLS®, Multiple Listing Service®)

Listing information last updated on April 15th, 2025 at 6:02pm MDT