

Courtesy Of Jeff D Jackson Of Bode

\$649,900 - 3 Ashbury Crescent, Spruce Grove

MLS® #E4428591

\$649,900

3 Bedroom, 2.50 Bathroom, 1,994 sqft
Single Family on 0.00 Acres

Jesperdale, Spruce Grove, AB

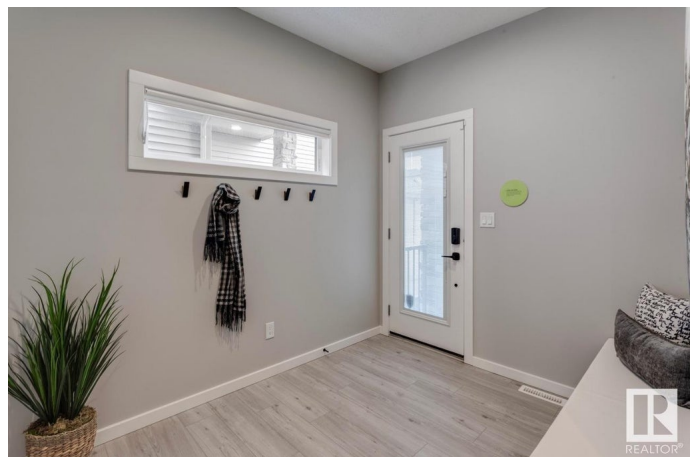
Luxury Living in Jesperdale, Spruce Grove!
This stunning 1,928 sq ft two-story Show Home features 3 bedrooms, 2.5 baths, a bonus room, 9' ceilings and a separate basement entrance. It includes front and back landscaping and a fully finished, heated double garage, air conditioning and outdoor permanent lighting. Over \$141,355 in options and upgrades, including: a modern rear kitchen with two-tone GEM cabinetry, a larger island, built-in beverage fridge, upgraded Bespoke appliances and under-cabinet LED lightning. An open-concept main floor with a custom electric fireplace, luxury vinyl plank flooring, quartz countertops and upgraded fixtures. A primary bedroom with a tray ceiling, 5-piece spa-inspired ensuite featuring a soaker tub, U by Moen digital shower and a walk-in closet leading to an upgraded laundry room with Samsung washer/dryer and laundry sink. Custom built-ins, upgraded doors, extra windows for natural light, high-end lighting and premium finishes throughout. Photos are representative.

Built in 2023

Essential Information

MLS® # E4428591

Price \$649,900



Bedrooms	3
Bathrooms	2.50
Full Baths	2
Half Baths	1
Square Footage	1,994
Acres	0.00
Year Built	2023
Type	Single Family
Sub-Type	Detached Single Family
Style	2 and Half Storey
Status	Active

Community Information

Address	3 Ashbury Crescent
Area	Spruce Grove
Subdivision	Jesperdale
City	Spruce Grove
County	ALBERTA
Province	AB
Postal Code	T7X 3C6

Amenities

Amenities	Open Beam
Parking Spaces	4
Parking	Double Garage Attached

Interior

Interior Features	ensuite bathroom			
Appliances	Dishwasher-Built-In,	Dryer,	Oven-Microwave,	Refrigerator,
	Stove-Electric, Washer			
Heating	Forced Air-1, Natural Gas			
Fireplace	Yes			
Fireplaces	Insert			
Stories	2			
Has Basement	Yes			
Basement	Full, Unfinished			

Exterior

Exterior	Wood, Vinyl
----------	-------------

Exterior Features	Park/Reserve, Playground Nearby, Schools, Shopping Nearby
Roof	Asphalt Shingles
Construction	Wood, Vinyl
Foundation	Concrete Perimeter

Additional Information

Date Listed April 2nd, 2025

Days on Market 8

Zoning Zone 91

DATA IS DEEMED RELIABLE BUT IS NOT GUARANTEED ACCURATE BY THE REALTORS® ASSOCIATION OF EDMONTON. COPYRIGHT 2025 BY THE REALTORS® ASSOCIATION OF EDMONTON. ALL RIGHTS RESERVED. Trademarks are owned or controlled by the Canadian Real Estate Association (CREA) and identify real estate professionals who are members of CREA (REALTOR®, REALTORS®) and/or the quality of services they provide (MLS®, Multiple Listing Service®)

Listing information last updated on April 10th, 2025 at 3:32pm MDT