

Courtesy Of Kelly A Grant Of Sweetly

\$700,000 - 3727 Cherry Loop, Edmonton

MLS® #E4429369

\$700,000

6 Bedroom, 3.50 Bathroom, 2,544 sqft

Single Family on 0.00 Acres

The Orchards At Ellerslie, Edmonton, AB

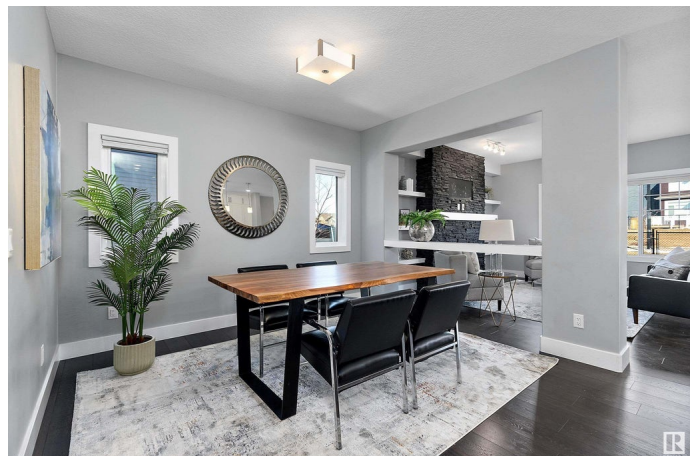
Welcome to this stunning 2-storey home in The Orchards at Ellerslie! Featuring 6 bedrooms (4 up), 4 bathrooms, and over 2,500 sq. ft. of beautifully finished space—plus a separate entrance to a fully self-contained in-law suite in the basement with 2 bedrooms, a kitchen, bath, living area, and laundry. The main floor boasts an open-concept layout with a chef-inspired kitchen, quartz countertops, stainless steel appliances, an oversized island, and a walk-through pantry. A cozy stone-facing gas fireplace anchors the living room, while a flex space offers versatility as an office or formal dining. Upstairs, enjoy a spacious bonus room and a luxurious primary suite with spa-like ensuite, plus 3 more bedrooms! The backyard is fenced, landscaped, and backs onto a walking trail leading to Orchards Link Park! Just steps from Jan Reimer School, parks, and the Orchards Club House—this is the perfect home for multi-generational living. Pre-inspected and available for immediate possession, don't miss it!

Built in 2018

Essential Information

MLS® # E4429369

Price \$700,000



Bedrooms	6
Bathrooms	3.50
Full Baths	3
Half Baths	1
Square Footage	2,544
Acres	0.00
Year Built	2018
Type	Single Family
Sub-Type	Detached Single Family
Style	2 Storey
Status	Active

Community Information

Address	3727 Cherry Loop
Area	Edmonton
Subdivision	The Orchards At Ellerslie
City	Edmonton
County	ALBERTA
Province	AB
Postal Code	T6X 2K7

Amenities

Amenities	Deck
Parking Spaces	4
Parking	Double Garage Attached

Interior

Interior Features	ensuite bathroom
Appliances	Hood Fan, Microwave Hood Fan, Dryer-Two, Refrigerators-Two, Stoves-Two, Washers-Two, Dishwasher-Two
Heating	Forced Air-1, Natural Gas
Fireplace	Yes
Fireplaces	Stone Facing
Stories	3
Has Basement	Yes
Basement	Full, Finished

Exterior

Exterior	Wood, Stone, Vinyl
----------	--------------------

Exterior Features	Fenced, No Back Lane, Park/Reserve, Playground Nearby, Public Transportation, Schools, Shopping Nearby
Roof	Asphalt Shingles
Construction	Wood, Stone, Vinyl
Foundation	Concrete Perimeter

School Information

Elementary	Jan Reimer School
Middle	Jan Reimer School

Additional Information

Date Listed	April 5th, 2025
Days on Market	12
Zoning	Zone 53
HOA Fees	450
HOA Fees Freq.	Annually

DATA IS DEEMED RELIABLE BUT IS NOT GUARANTEED ACCURATE BY THE REALTORS® ASSOCIATION OF EDMONTON. COPYRIGHT 2025 BY THE REALTORS® ASSOCIATION OF EDMONTON. ALL RIGHTS RESERVED. Trademarks are owned or controlled by the Canadian Real Estate Association (CREA) and identify real estate professionals who are members of CREA (REALTOR®, REALTORS®) and/or the quality of services they provide (MLS®, Multiple Listing Service®)

Listing information last updated on April 17th, 2025 at 4:02pm MDT