

Courtesy Of David C St. Jean Of Exp Realty

\$349,900 - 232 41 Summerwood Boulevard, Sherwood Park

MLS® #E4429557

\$349,900

3 Bedroom, 2.50 Bathroom, 1,302 sqft
Condo / Townhouse on 0.00 Acres

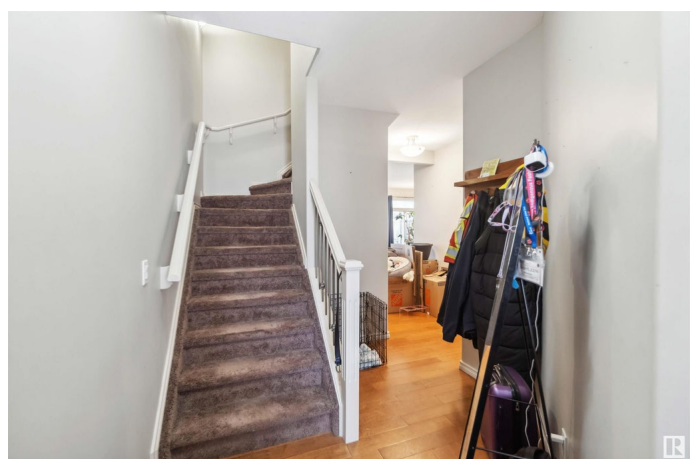
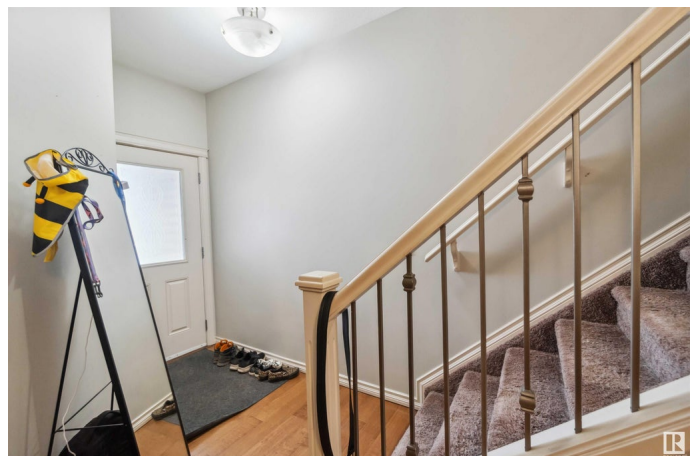
Summerwood, Sherwood Park, AB

With more than 1400sqft, this stunning 3 bedroom, 2.5-bath townhome combines style and comfort throughout. Featuring 9' ceilings on the main floor, a spacious great room with a cozy gas fireplace, and a blend of soft carpeting and elegant hardwood floors. Upstairs, you'll find three spacious bedrooms, 2 full bathrooms, and an additional half-bath for extra convenience. Step outside to the 10' x 10' deck off the dinette, or enjoy the convenience of the insulated double attached garage. The unfinished basement offers the perfect opportunity to add your personal touch. With nearby amenities like playgrounds, shopping, and dining, plus easy access to Yellowhead and the Anthony Henday, commuting to and from the heart of Sherwood Park is a breeze. Don't miss this incredible opportunity. All this home needs is YOU!

Built in 2007

Essential Information

MLS® #	E4429557
Price	\$349,900
Bedrooms	3
Bathrooms	2.50



Full Baths	2
Half Baths	1
Square Footage	1,302
Acres	0.00
Year Built	2007
Type	Condo / Townhouse
Sub-Type	Townhouse
Style	2 Storey
Status	Active

Community Information

Address	232 41 Summerwood Boulevard
Area	Sherwood Park
Subdivision	Summerwood
City	Sherwood Park
County	ALBERTA
Province	AB
Postal Code	T8H 0C8

Amenities

Amenities	Ceiling 9 ft., Deck, Detectors Smoke
Parking	Double Garage Attached

Interior

Interior Features	ensuite bathroom
Appliances	Dishwasher-Built-In, Dryer, Garage Control, Garage Opener, Oven-Microwave, Refrigerator, Stove-Electric, Washer, Window Coverings
Heating	Forced Air-1, Natural Gas
Stories	2
Has Basement	Yes
Basement	Full, Unfinished

Exterior

Exterior	Wood, Stone, Vinyl
Exterior Features	Fruit Trees/Shrubs, Landscaped, Playground Nearby, Public Transportation, Shopping Nearby
Roof	Asphalt Shingles
Construction	Wood, Stone, Vinyl

Foundation Concrete Perimeter

School Information

Elementary DAVIDSON CREEK ELEMENTARY

Middle SHERWOOD HGTS

High SALISBURY COMP

Additional Information

Date Listed April 7th, 2025

Days on Market 16

Zoning Zone 25

Condo Fee \$319

DATA IS DEEMED RELIABLE BUT IS NOT GUARANTEED ACCURATE BY THE REALTORS® ASSOCIATION OF EDMONTON. COPYRIGHT 2025 BY THE REALTORS® ASSOCIATION OF EDMONTON. ALL RIGHTS RESERVED. Trademarks are owned or controlled by the Canadian Real Estate Association (CREA) and identify real estate professionals who are members of CREA (REALTOR®, REALTORS®) and/or the quality of services they provide (MLS®, Multiple Listing Service®)

Listing information last updated on April 23rd, 2025 at 3:32pm MDT