

\$344,998 - 36 Elizabeth Gardens, Spruce Grove

MLS® #E4429596

\$344,998

2 Bedroom, 2.50 Bathroom, 1,098 sqft

Single Family on 0.00 Acres

Easton, Spruce Grove, AB

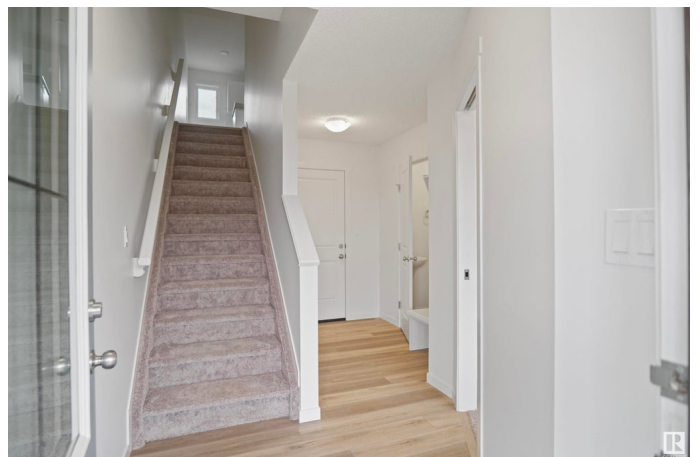
NO CONDO FEES and AMAZING VALUE!

You read that right welcome to this brand new townhouse unit the "Gabriel" Built by StreetSide Developments and is located in one of Spruce Groves newest premier communities of Easton. With almost 1100 square Feet, it comes with front yard landscaping and a single over sized attached garage, this opportunity is perfect for a young family or young couple. Your main floor is complete with upgrade luxury Vinyl Plank flooring throughout the great room and the kitchen. The main entrance/ main floor has a good sized Den that can be also used as a bedroom, it also had a 2 piece bathroom. Highlighted in your new kitchen are upgraded cabinets, upgraded counter tops and a tile back splash. The upper level has 2 bedrooms and 2 full bathrooms. *** UNDER CONSTRUCTION , Photos used are from the exact model previously built and this home will be complete by mid-end October of 2025 ***

Built in 2025

Essential Information

MLS® #	E4429596
Price	\$344,998
Bedrooms	2
Bathrooms	2.50



Full Baths	2
Half Baths	1
Square Footage	1,098
Acres	0.00
Year Built	2025
Type	Single Family
Sub-Type	Residential Attached
Style	2 Storey
Status	Active

Community Information

Address	36 Elizabeth Gardens
Area	Spruce Grove
Subdivision	Easton
City	Spruce Grove
County	ALBERTA
Province	AB
Postal Code	T7X 3C7

Amenities

Amenities	See Remarks
Parking	Over Sized, Single Garage Attached

Interior

Interior Features	ensuite bathroom
Appliances	Garage Control, Garage Opener, See Remarks
Heating	Forced Air-1, Natural Gas
Stories	3
Has Basement	Yes
Basement	None, No Basement

Exterior

Exterior	Wood, Stone, Vinyl
Exterior Features	Fenced, Golf Nearby, Landscaped, Park/Reserve, Playground Nearby, Public Swimming Pool, Public Transportation, Schools, Shopping Nearby, See Remarks
Roof	Asphalt Shingles
Construction	Wood, Stone, Vinyl
Foundation	Concrete Perimeter

Additional Information

Date Listed April 7th, 2025

Days on Market 16

Zoning Zone 91

DATA IS DEEMED RELIABLE BUT IS NOT GUARANTEED ACCURATE BY THE REALTORS® ASSOCIATION OF EDMONTON. COPYRIGHT 2025 BY THE REALTORS® ASSOCIATION OF EDMONTON. ALL RIGHTS RESERVED. Trademarks are owned or controlled by the Canadian Real Estate Association (CREA) and identify real estate professionals who are members of CREA (REALTOR®, REALTORS®) and/or the quality of services they provide (MLS®, Multiple Listing Service®)

Listing information last updated on April 23rd, 2025 at 3:02pm MDT