

Courtesy Of Brian C Cyr and Erin L Willman Of RE/MAX Elite

# \$172,000 - 312 16035 132 Street, Edmonton

MLS® #E4431000

**\$172,000**

1 Bedroom, 1.00 Bathroom, 756 sqft  
Condo / Townhouse on 0.00 Acres

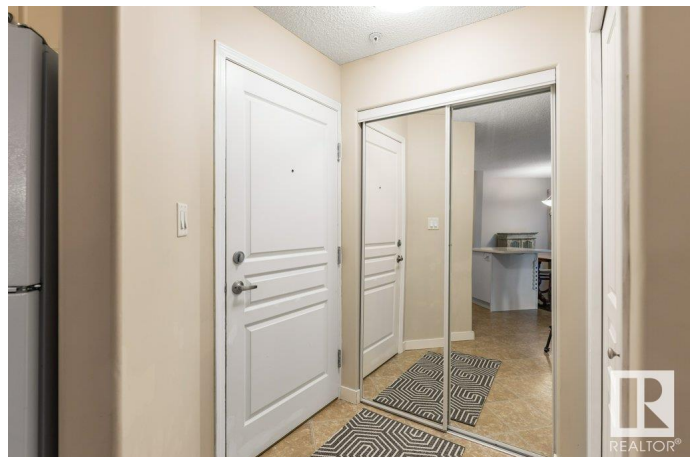
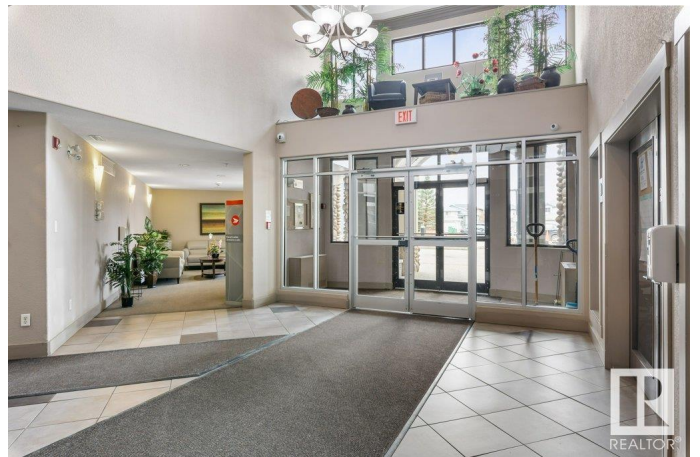
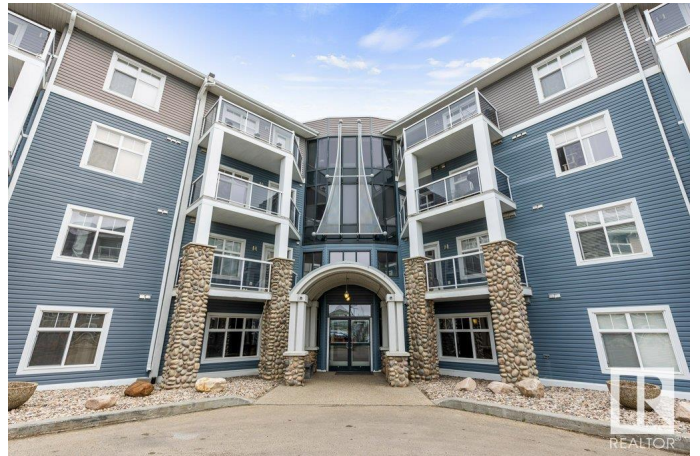
Oxford, Edmonton, AB

Welcome to Oxford Bay, a beautifully designed and peaceful complex near transit and all amenities. Enjoy fantastic building features including a fitness room, social/games room, rooftop patio, gazebo overlooking the lake, and scenic walking trails. From the moment you enter, you'll feel the warm, friendly vibe that sets this community apart. This 3rd-floor unit offers 1 bedroom plus a den (ideal 2nd bedroom or office), a 4-piece bath, dining area, and a modern kitchen. Includes titled underground parking (#379). Meticulously maintained with warm neutral décor, laminate floors in the dining and living rooms, in-suite laundry, A/C, and a west-facing balcony with a peaceful residential view. BBQ gas hookup and plenty of natural light complete the package. Quick access to the Henday makes commuting easy. Why rent when you can own this beautiful home?

Built in 2005

## Essential Information

MLS® #	E4431000
Price	\$172,000
Bedrooms	1
Bathrooms	1.00
Full Baths	1
Square Footage	756



Acres	0.00
Year Built	2005
Type	Condo / Townhouse
Sub-Type	Lowrise Apartment
Style	Single Level Apartment
Status	Active

### **Community Information**

Address	312 16035 132 Street
Area	Edmonton
Subdivision	Oxford
City	Edmonton
County	ALBERTA
Province	AB
Postal Code	T6V 0B4

### **Amenities**

Amenities	Air Conditioner, Exercise Room, Intercom, Parking-Visitor, Party Room, Secured Parking, Security Door, See Remarks
Parking	Parkade, Underground

### **Interior**

Appliances	Dishwasher-Built-In, Dryer, Microwave Hood Fan, Refrigerator, Stove-Electric, Washer, Window Coverings
Heating	Fan Coil, Natural Gas
# of Stories	4
Stories	1
Has Basement	Yes
Basement	None, No Basement

### **Exterior**

Exterior	Wood, Stone, Vinyl
Exterior Features	Flat Site, Landscaped, Public Transportation, Shopping Nearby, See Remarks
Roof	Asphalt Shingles
Construction	Wood, Stone, Vinyl
Foundation	Concrete Perimeter

### **Additional Information**

Date Listed	April 15th, 2025
-------------	------------------

Days on Market	9
Zoning	Zone 27
Condo Fee	\$505

DATA IS DEEMED RELIABLE BUT IS NOT GUARANTEED ACCURATE BY THE REALTORS® ASSOCIATION OF EDMONTON. COPYRIGHT 2025 BY THE REALTORS® ASSOCIATION OF EDMONTON. ALL RIGHTS RESERVED. Trademarks are owned or controlled by the Canadian Real Estate Association (CREA) and identify real estate professionals who are members of CREA (REALTOR®, REALTORS®) and/or the quality of services they provide (MLS®, Multiple Listing Service®)

Listing information last updated on April 24th, 2025 at 5:02pm MDT