

\$75,000 - 712 10024 Jasper Avenue, Edmonton

MLS® #E4431221

\$75,000

1 Bedroom, 1.00 Bathroom, 405 sqft

Condo / Townhouse on 0.00 Acres

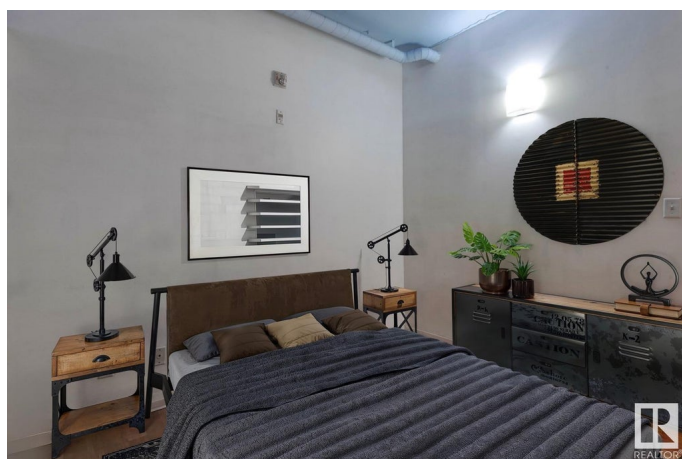
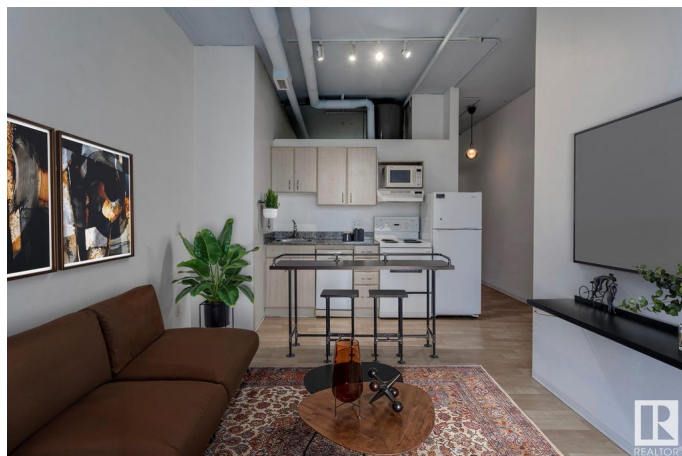
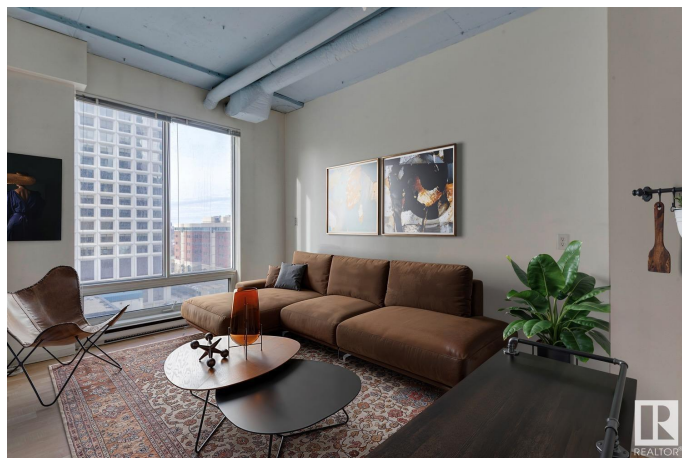
Downtown (Edmonton), Edmonton, AB

Welcome to urban sophistication at Cambridge Lofts, where modern design meets downtown convenience. This open-concept, south-facing loft offers breathtaking views of the North Saskatchewan River, flooding the space with natural light throughout the day. Soaring ceilings, industrial accents, and expansive windows give this unit a spacious, airy feel - perfect for professionals, creatives, or anyone craving a unique urban vibe. The layout is both functional and flexible, ideal for customizing to suit your lifestyle. Located just steps from Rice Howard Way, you're in the center of it all: fine dining, caf  s, nightlife, and the LRT are right at your doorstep, making commuting a breeze and entertainment effortless. This building is pet friendly with board approval and is receptive to Airbnbs. Whether you're looking for a vibrant home base or a stylish investment, this loft combines character, comfort, and an unbeatable downtown location.

Built in 1968

Essential Information

MLS® #	E4431221
Price	\$75,000
Bedrooms	1
Bathrooms	1.00



Full Baths	1
Square Footage	405
Acres	0.00
Year Built	1968
Type	Condo / Townhouse
Sub-Type	Apartment High Rise
Style	Loft
Status	Active

Community Information

Address	712 10024 Jasper Avenue
Area	Edmonton
Subdivision	Downtown (Edmonton)
City	Edmonton
County	ALBERTA
Province	AB
Postal Code	T5J 1R9

Amenities

Amenities	Ceiling 10 ft., Detectors Smoke, Security Door, Security Personnel
Parking	No Parking

Interior

Appliances	Dishwasher-Built-In, Dryer, Hood Fan, Refrigerator, Stove-Electric, Washer
Heating	Baseboard, Electric
# of Stories	18
Stories	1
Has Basement	Yes
Basement	None, No Basement

Exterior

Exterior	Concrete
Exterior Features	Playground Nearby, Public Swimming Pool, Public Transportation, River View, Schools, Shopping Nearby, View Downtown
Roof	Tar & Gravel
Construction	Concrete
Foundation	Concrete Perimeter

Additional Information

Date Listed	April 16th, 2025
Days on Market	8
Zoning	Zone 12
Condo Fee	\$413

DATA IS DEEMED RELIABLE BUT IS NOT GUARANTEED ACCURATE BY THE REALTORS® ASSOCIATION OF EDMONTON. COPYRIGHT 2025 BY THE REALTORS® ASSOCIATION OF EDMONTON. ALL RIGHTS RESERVED. Trademarks are owned or controlled by the Canadian Real Estate Association (CREA) and identify real estate professionals who are members of CREA (REALTOR®, REALTORS®) and/or the quality of services they provide (MLS®, Multiple Listing Service®)

Listing information last updated on April 24th, 2025 at 9:47am MDT