

# \$110,000 - 117 610 Calahoo Road, Spruce Grove

MLS® #E4431554

**\$110,000**

1 Bedroom, 1.00 Bathroom, 353 sqft  
Condo / Townhouse on 0.00 Acres

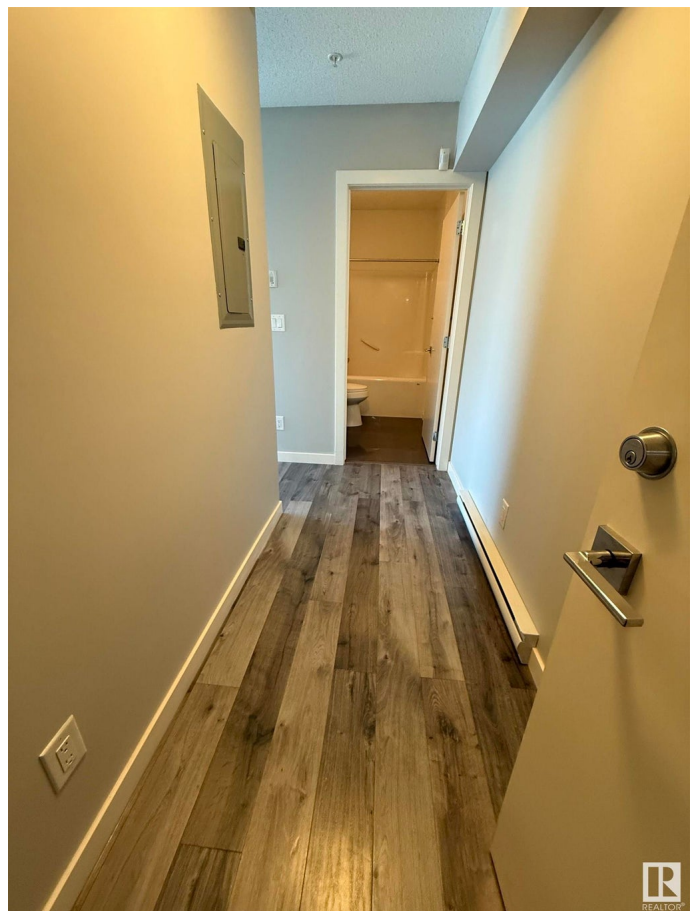
City Centre, Spruce Grove, AB

Simplify your life with this modern, affordable, safe and secure BOUTIQUE CONDO. Bright open concept studio suite with full size stainless 4 steel appliances in the spacious kitchen. Thereâ€™s 4 pce bathroom and in-suite laundry. Start your minimalistic lifestyle! Doing this can help create a sense of peace and calm in this crazy busy world. This complex features a guest suite, fitness room, and a convenient outside gazebo spot for residents! Located in central Spruce Grove, the complex is just steps away from the Heritage Grove Park Trail System, Perks Coffee House, Art Gallery, Library, restaurants and shopping. Your ownership could cost you less than rent!

Built in 2016

## Essential Information

MLS® #	E4431554
Price	\$110,000
Bedrooms	1
Bathrooms	1.00
Full Baths	1
Square Footage	353
Acres	0.00
Year Built	2016
Type	Condo / Townhouse



Sub-Type	Lowrise Apartment
Style	Single Level Apartment
Status	Active

### Community Information

Address	117 610 Calahoo Road
Area	Spruce Grove
Subdivision	City Centre
City	Spruce Grove
County	ALBERTA
Province	AB
Postal Code	T7X 1R1

### Amenities

Amenities	Exercise Room, Guest Suite, No Animal Home, No Smoking Home, Security Door
Parking	Stall

### Interior

Appliances	Dishwasher-Built-In, Dryer, Microwave Hood Fan, Refrigerator, Stove-Electric, Washer
Heating	Baseboard, Electric
# of Stories	4
Stories	1
Has Basement	Yes
Basement	None, No Basement

### Exterior

Exterior	Wood, Vinyl
Exterior Features	Golf Nearby, Public Swimming Pool, Public Transportation, Schools, Shopping Nearby
Roof	Asphalt Shingles
Construction	Wood, Vinyl
Foundation	Concrete Perimeter

### Additional Information

Date Listed	April 17th, 2025
Days on Market	7
Zoning	Zone 91
Condo Fee	\$234

DATA IS DEEMED RELIABLE BUT IS NOT GUARANTEED ACCURATE BY THE REALTORS® ASSOCIATION OF EDMONTON. COPYRIGHT 2025 BY THE REALTORS® ASSOCIATION OF EDMONTON. ALL RIGHTS RESERVED. Trademarks are owned or controlled by the Canadian Real Estate Association (CREA) and identify real estate professionals who are members of CREA (REALTOR®, REALTORS®) and/or the quality of services they provide (MLS®, Multiple Listing Service®)

Listing information last updated on April 24th, 2025 at 1:17am MDT