

Courtesy Of Ryan R Lauber Of RE/MAX Elite

\$649,900 - 6601 10310 102 Street, Edmonton

MLS® #E4432022

\$649,900

2 Bedroom, 2.00 Bathroom, 868 sqft
Condo / Townhouse on 0.00 Acres

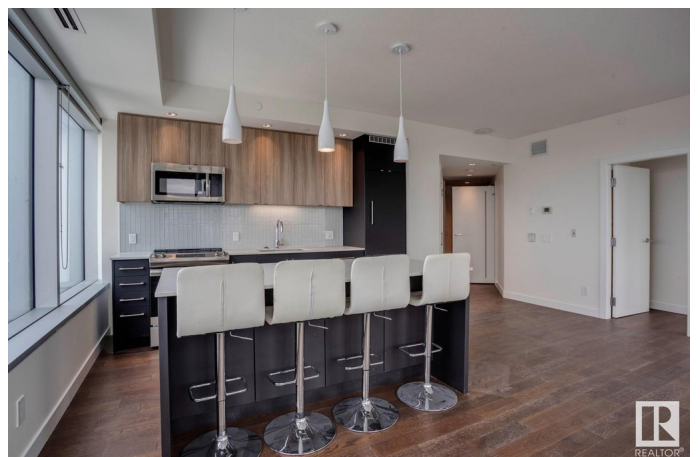
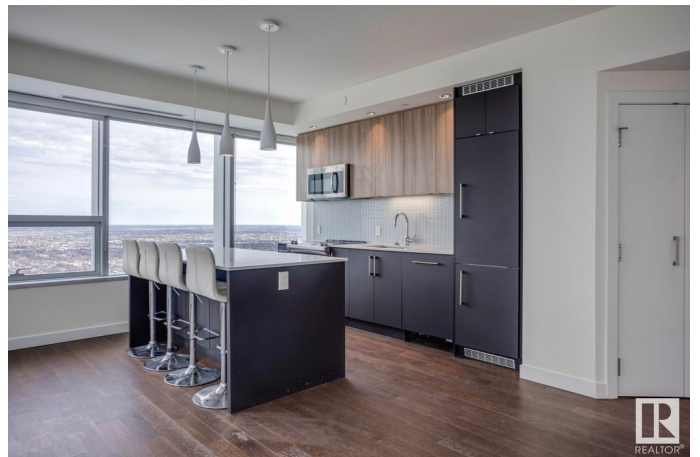
Downtown (Edmonton), Edmonton, AB

PENTHOUSE UNIT IN WESTERN CANADA'S TALLEST BUILDING! Live in Luxury at SKY Residences, located in the heart of the vibrant Ice District. This stylish 868 sqft, 2 bed/2 bath has so much to offer.....premium finishing, quartz counters, hardwood/tile throughout, floor to ceiling windows, patio, panoramic views of the City, in-suite laundry, TWO TITLED underground parking stalls, and more. This unparalleled complex offers the best in exceptional amenities: access to JW Marriott services, personal concierge service, access to the 30th floor that includes indoor/outdoor social/recreation centre, party room/kitchen, golf simulator, fitness centre, fireplaces, hot tub, BBQ areas, and more. Indoor access to Rogers Place, steps to great shopping and fine dining, and direct connection to the downtown pedway and LRT systems. Live the good life in Edmonton's downtown core!

Built in 2016

Essential Information

| | |
|----------------|-----------|
| MLS® # | E4432022 |
| Price | \$649,900 |
| Bedrooms | 2 |
| Bathrooms | 2.00 |
| Full Baths | 2 |
| Square Footage | 868 |



| | |
|------------|---------------------|
| Acres | 0.00 |
| Year Built | 2016 |
| Type | Condo / Townhouse |
| Sub-Type | Apartment High Rise |
| Style | Penthouse |
| Status | Active |

Community Information

| | |
|-------------|-----------------------|
| Address | 6601 10310 102 Street |
| Area | Edmonton |
| Subdivision | Downtown (Edmonton) |
| City | Edmonton |
| County | ALBERTA |
| Province | AB |
| Postal Code | T5J 0K5 |

Amenities

| | |
|-----------|---|
| Amenities | Air Conditioner, Ceiling 9 ft., Club House, Exercise Room, Hot Tub, No Animal Home, No Smoking Home, Party Room, Patio, Security Door, Social Rooms, Storage-Locker Room, Concierge Service |
| Parking | Double Indoor, Heated, Underground |

Interior

| | |
|-------------------|--|
| Interior Features | ensuite bathroom |
| Appliances | Dishwasher-Built-In, Dryer, Microwave Hood Fan, Refrigerator, Stove-Electric, Washer, Window Coverings |
| Heating | Fan Coil, Natural Gas |
| # of Stories | 66 |
| Stories | 1 |
| Has Basement | Yes |
| Basement | None, No Basement |

Exterior

| | |
|-------------------|---|
| Exterior | Concrete, Metal |
| Exterior Features | Public Transportation, River Valley View, Schools, Shopping Nearby, View City, View Downtown, See Remarks |
| Roof | EPDM Membrane |
| Construction | Concrete, Metal |
| Foundation | Concrete Perimeter |

Additional Information

Date Listed April 19th, 2025

Days on Market 5

Zoning Zone 12

Condo Fee \$745

DATA IS DEEMED RELIABLE BUT IS NOT GUARANTEED ACCURATE BY THE REALTORS® ASSOCIATION OF EDMONTON. COPYRIGHT 2025 BY THE REALTORS® ASSOCIATION OF EDMONTON. ALL RIGHTS RESERVED. Trademarks are owned or controlled by the Canadian Real Estate Association (CREA) and identify real estate professionals who are members of CREA (REALTOR®, REALTORS®) and/or the quality of services they provide (MLS®, Multiple Listing Service®)

Listing information last updated on April 24th, 2025 at 10:33am MDT