

Courtesy Of Dan Royer Of Initia Real Estate

# \$730,000 - 5230 Admiral Walter Hose Street, Edmonton

MLS® #E4432281

**\$730,000**

4 Bedroom, 3.50 Bathroom, 2,442 sqft

Single Family on 0.00 Acres

Griesbach, Edmonton, AB

This immaculately maintained, custom-built Homes by Avi home is loaded with upgrades and high-end features. Sunlight and space abound throughout, with hardwood floors, Berber carpeting, and high-end appliances by Miele, GE Profile, Marvel, and Whirlpool. The oversized 24x24 insulated garage is spotless, wired for EVs, and zoned for a suite. Enjoy summer in the sun-drenched backyard with beautiful custom landscaping, privacy trees, perennials, shrubs, and rain barrels. The massive composite deck with glass railings adds style and ease. Inside offers a large den, formal dining, main floor laundry, and a spacious great room with gas fireplace. Upstairs: 3 generous bedrooms, including a sprawling primary with a luxurious ensuite and walk-in. The finished basement includes a rec room, fireplace, and extra bedroom. With A/C, Hardie board siding, water softener, and pristine condition throughout, this home is impressively clean, spacious, and move-in ready.

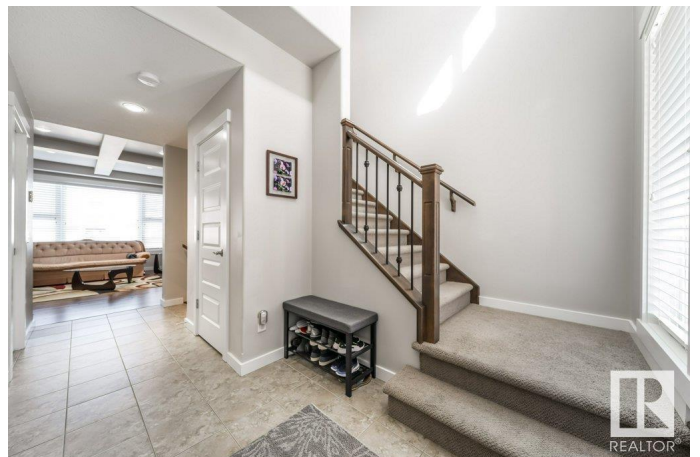
Built in 2014

## Essential Information

MLS® # E4432281

Price \$730,000

Bedrooms 4



Bathrooms	3.50
Full Baths	3
Half Baths	1
Square Footage	2,442
Acres	0.00
Year Built	2014
Type	Single Family
Sub-Type	Detached Single Family
Style	2 Storey
Status	Active

### **Community Information**

Address	5230 Admiral Walter Hose Street
Area	Edmonton
Subdivision	Griesbach
City	Edmonton
County	ALBERTA
Province	AB
Postal Code	T5E 6T4

### **Amenities**

Amenities	Ceiling 9 ft., Deck, No Smoking Home
Parking	Double Garage Detached, Insulated, Over Sized

### **Interior**

Interior Features	ensuite bathroom
Appliances	Air Conditioning-Central, Alarm/Security System, Dishwasher-Built-In, Dryer, Hood Fan, Oven-Microwave, Refrigerator, Stove-Gas, Washer, Water Softener, Window Coverings, Wine/Beverage Cooler
Heating	Forced Air-1, Natural Gas
Fireplace	Yes
Fireplaces	Direct Vent
Stories	3
Has Basement	Yes
Basement	Full, Finished

### **Exterior**

Exterior	Wood, Stone, Hardie Board Siding
Exterior Features	Back Lane, Fenced, Landscaped, Schools, Shopping Nearby

Roof	Asphalt Shingles
Construction	Wood, Stone, Hardie Board Siding
Foundation	Concrete Perimeter

### **School Information**

Elementary	Major-General Griesbach Sc
Middle	Major-General Griesbach Sc
High	Queen Elizabeth School

### **Additional Information**

Date Listed	April 23rd, 2025
Days on Market	1
Zoning	Zone 27

DATA IS DEEMED RELIABLE BUT IS NOT GUARANTEED ACCURATE BY THE REALTORS® ASSOCIATION OF EDMONTON. COPYRIGHT 2025 BY THE REALTORS® ASSOCIATION OF EDMONTON. ALL RIGHTS RESERVED. Trademarks are owned or controlled by the Canadian Real Estate Association (CREA) and identify real estate professionals who are members of CREA (REALTOR®, REALTORS®) and/or the quality of services they provide (MLS®, Multiple Listing Service®)

Listing information last updated on April 24th, 2025 at 5:47pm MDT